



North Lincoln
SANITARY SERVICE

Resource Guide



Phone: (541) 994-5555 | Fax: (541) 994-5525



1726 SE Hwy 101, Lincoln City, OR 97367



information@northlincolnsanitary.com



www.northlincolnsanitary.com



App: North Lincoln Sanitary





Glossary

Page 1, 2, 3...	Residential Service
Page 4, 5, 6...	Commercial Service
Page 7.....	Junk Removal
Page 8.....	Locations
Page 9, 10.....	Drop Boxes
Page 11.....	Temporary Containers
Page 12, 13...	Additional Services
Page 14.....	Mixed Recycling Guide
Page 15.....	Mixed Compost Guide
Page 16.....	Recycling Beyond the Curb
Page 17, 18...	Schooner Creek Transfer Station
Page 19.....	Waste Reduction
Page 20.....	Community Resources

Residential Service

North Lincoln Sanitary Service provides residential garbage service, which includes mixed recycling and mixed compost for no additional cost, to all customers in North Lincoln County.

To start service, call our office at (541) 994-5555.

Garbage

We offer 32, 64, or 96-gallon roll carts for once a week, every other week, or once a month Garbage Service.

Recycling

We offer 96-gallon roll carts for every other week Mixed Recycling Service.

Mixed Compost

We offer 96-gallon roll carts for every other week Mixed Compost Service.

32-Gallon Roll Cart



64-Gallon Roll Cart



96-Gallon Roll Cart



Residential Service

Billing

Residential customers are billed once a month in arrears, due on the 15th of each month. We offer AutoPay using a credit/debit card or checking/savings account information. If you choose to not use AutoPay, a three-month deposit is required to start service. Start or access your payment portal at Online-Billpay (www.online-billpay.com). Go paperless!

Road Side or Carry Out

Road Side: Included.

Carry Out: We will walk up to 75 ft. to your unobstructed roll carts for an extra charge.

Extra Garbage

There is an extra charge for up to 3 bags outside of your roll cart. Set the bagged/boxed garbage next to your cart.

REMEMBER TO SPACE YOUR ROLL CARTS 3 FEET APART



Download our App *North Lincoln Sanitary* to check your service calendar, set service notifications, check what goes where, pay your bill, and schedule Bulky Item or Scrap Metal pickup.

Residential Service

Non-Payment

Non-payment of service will result in removal of your roll carts after the 3rd week from the stop date. Fees will be assessed to your account accordingly.

Skip Service

If you have a minimum of every other week service, we can give you a partial credit for vacation skips if scheduled one business day in advance.

Moving

Reach out to cancel or change your address for services. You are responsible for service until we are notified by you. Your last bill will come the month after service stops.

Holidays

All routes are on schedule for holidays except Christmas Day. If your pickup falls on/after Christmas Day, there will be a one day delay in pickup.

Missed Pick Up

If you miss your collection day pick up, please call the office to go over your options at (541) 994-5555.

Pick Up Time

Place roll carts out for pick up the night before service. Routes start early AM. Same pick up time is not guaranteed.

Locks & Lock Bars

NLSS provides containers with lock bars and our locks for an additional charge. Call the office to have one placed.

Bear Cart

NLSS provides bear carts to residents who are in need of extra security from animals for an additional charge. Call the office to order.

Commercial Service

Commercial Garbage Service

NLSS offers 32, 64, or 96-gallon roll carts and 1.0 to 1.5 cubic yard containers. Roll carts can be serviced up to once a week. Containers can be serviced as frequently as five days a week.

1-Yard Container



1.5-Yard Container



32-Gallon Roll Cart



64-Gallon Roll Cart



96-Gallon Roll Cart



Commercial Service

Commercial Recycling Service

Recycling service is included with garbage service at no additional cost.

Mixed Recycling: 96-gallon roll carts

Cardboard Recycling: 1.0 or 1.5 cubic yard containers

Glass Recycling: 96-gallon roll carts

1-Yard Container



1.5-Yard Container



96-Gallon Roll Cart



Commercial Service

Road Side or Carry Out

Road Side: Included.

Carry Out: We will walk up to 75 ft. to your unobstructed roll carts for an extra charge.

Locks & Lock Bars

NLSS provides containers with lock bars and our locks for an additional charge. Call the office to have one placed.

Missed Pick Up

If you miss your collection day pick up, please call the office to go over your options at (541) 994-5555.

Extra Garbage

There is an extra charge for up to 3 bags outside the container or roll cart. Set out bagged garbage next to container.

Enclosures

Containers are required to be located in a sight-obscuring enclosure. Contact us to design your enclosure to have accessibility to our team and properly fit your containers. All containers must be located on a hard level surface.

Billing

Commercial customers are billed once a month in arrears, due on the 15th of each month.

Either use AutoPay with a credit/debit card or checking account or pay a three-month deposit to start service.

Pick up Time

Drivers begin routes early in the morning. Please make sure your enclosure or containers are accessible the night before your scheduled pickup.

Holidays

All routes are on schedule for holidays except Christmas Day. When it falls on a weekday, collection days are pushed back one day for the remainder of the week.

Junk Removal

Call the office at (541) 994-5555 for a quote!



Bulky Items

Do you have bulky items you aren't able to sell or donate? North Lincoln Sanitary Service has a bulky item pick up every Wednesday or you can take those items to the Schooner Creek Refuse Transfer Station.

Bulky Item Carry Out

Do you have bulky items you cannot carry out to the curb yourself? North Lincoln Sanitary Service will come inside your home to carry out prepared bulky waste for an additional charge. Work with our team to find out more about our preparation instructions and requirements.

Scrap Metal

Do you have scrap metal larger than 18" and 10 lbs. that can't fit in your curbside recycling roll cart? North Lincoln Sanitary Service has a scrap metal pick up every Friday or you can take those items to the Schooner Creek Refuse Transfer Station and Recycling Center.



Phone: (541) 994-5555 | Fax: (541) 994-5525



information@northlincolnsanitary.com



Schedule: www.northlincolnsanitary.com



Office & Recycling Center: 1726 SE Hwy 101, Lincoln City, OR 97367
Schooner Creek: 288 S Anderson Creek Rd, Lincoln City, OR 97367



Locations

Visit our website (www.northlincolnsanitary.com) for holiday hours.

Office

1726 SE Hwy 101, Lincoln City, OR 97367

Hours: 8am - 5pm, Monday - Friday



Recycling Center

1726 SE Hwy 101, Lincoln City, OR 97367

Hours: 8am - 5pm, Monday - Friday

1st Saturday of the Month: 10am - 1pm



Schooner Creek Refuse Transfer Station

288 S Anderson Creek Rd., Lincoln City, OR 97367

Hours: 8am - 4pm, Monday - Saturday



Drop Boxes

Instructions

NLSS offers 10, 20, 30, & 40 cubic yd. drop boxes for construction, large cleanups, or commercial/home projects. **Call to schedule.**

Delivery/Dump/Removal: One business day advance notice is needed for delivery, dump, and removal.

Paperwork: The Drop Box Liability Release Form is required before scheduling.

Payment: A deposit is required before delivery.

Rates: Please check our website (northlincolnsanitary.com) for rates or call the office (541) 994-5555. All boxes are charged the same and priced by the pound.

Time Period: Your deposit includes a 14-day rental. Beginning of the 15th day there is a \$20.00 per day rental charge.

Limits: The weight limit is 10 tons or 20,000 lbs. (about 10 yards of broken concrete, dirt, or gravel). Material cannot go above fill line.

Prohibited Items: These include hazardous waste, tires, auto batteries, electronics & wet paint. Put appliances at front of box and notify office.



10 yd. Drop Box

3' 8" H x 7' 6" W x 12' L



20 yd. Drop Box

2 Size : 3' 6" H x 7' 6" W x 20' L
Options : 4' 6" H x 7' 6" W x 16' L



30 yd. Drop Box

6' H x 7' 6" W x 20' L



40 yd. Drop Box

7' H x 7' 6" W x 20' L

Drop Boxes



Asbestos Information

All Construction & Demolition debris must be accompanied with documentation (The Drop Box Liability Release Form) proving the load does not contain asbestos-containing material.

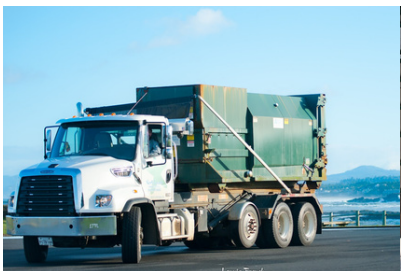
If any material in the box could be considered suspect for Asbestos-Containing Material (ACM), including but not limited to: flooring, sheetrock, duct work, roofing material, plaster, popcorn ceiling, or anything else that looks like it came from a remodel or demolition, the hauler and/or disposal site may refuse the box until the customer can provide documentation proving the load does not contain ACM.

If a box is picked up and undeclared, suspect, and/or ACM is discovered at the transfer station, the customer will be charged for all clean-up costs. Clean-ups could range in the thousands of dollars.

An asbestos survey is required if the structure was constructed before January 1st, 2004. Email the survey to information@northlincolnsanitary.com. If the survey has not been conducted, here are a list of surveyors and abatement contractors we recommend:

- Surveyors/Inspectors: <https://www.oregon.gov/deq/Hazards-and-Cleanup/Documents/asbAccredInspectors.pdf>
- Local Inspector: Stephen Marsh Construction (541-921-3396)
- Abatement Contractors: <https://www.oregon.gov/deq/filterdocs/asb-contr.pdf>

The Drop Box Liability Release Form can be found by calling (541-994-5555), emailing (information@northlincolnsanitary.com), or our website (<https://www.northlincolnsanitary.com/Garbage/DropBoxLiabilityRelease>).



Temporary Containers

Instructions

NLSS offers 1.0 or 1.5 cubic yard temporary metal containers with lids.

Delivery/Dump/Removal: One business day advance notice is needed for delivery, dump, and removal.

Payment: A deposit is required before delivery.

Rates: Please check our website (northlincolnsanitary.com) for rates or call the office (541) 994-5555.

Time Period: Your deposit includes a one-month rental. Two dumps are required to be completed within 30 days, additional dumps are priced individually. The rental period is 3-months maximum.

Prohibited Items: These include, tires, auto batteries, & wet paint. Appliances can be put in the front of the drop box and the office notified.



1.0 yd. 48.5" H x 29" W x 68" L



1.5 yd. 48.5" H x 38" W x 68" L



Additional Services

NLSS provides pickup or drop off services for materials that are not allowed in the landfill or are more tedious to dispose of properly.

Document Shredding

Bring your sensitive documents to the Recycling Center and we will shred them for a small charge.

Liquids

Bring your motor oil or vegetable oil to the Recycling Center and we will recycle them no charge.

Batteries

Drop off all batteries at the Recycling Center free of charge. Household batteries, including dry cell (AA, AAA, C, & D) and rechargeable batteries (Ni-Cd, Ni-MH, Li-ion, pb) are accepted, as well as auto batteries. These pose a major fire risk when punctured or in contact with water. Please do NOT put them in your roll carts.

Hazardous Materials

Please call the office (541) 994-5555 to describe the hazardous material in need of disposal & we will work to find a solution. Lincoln County Solid Waste District hosts a Household Hazardous Waste Event every July at one of the four transfer stations in the county where all HHW can be disposed of safely & free of charge.

Fluorescent Light Bulbs

Drop off compact and tube fluorescent light bulbs at the Recycling Center for a small charge.

Athletic/Tennis Shoes

Drop off any athletic or tennis shoe to the Recycling Center free of charge. They are recycled through Nike.

For more information: (541) 994-5555 | Information@northlincolnsanitary.com

Additional Services

Medical Waste

Medical waste, syringes, and dressings should be disposed of properly according to state law.

Do not place these items in your roll cart.

Sharps: Approved 1-gallon sharps containers are available for purchase. Sharps containers can be dropped off at our Office for a charge if not purchased with NLSS.

Medical Waste Containers: Approved 35-gallon medical waste containers for commercial use are available for purchase. Commercial customers can schedule medical waste pickup service.

Tires

All tires are required to be recycled for a charge. Choose between drop off at Schooner Creek Refuse Transfer Station or pickup on the Scrap Metal Route.

Appliances

All large appliances are required to be recycled. Choose between drop off at the Recycling Center, Schooner Creek Refuse Transfer Station, or pickup on the Scrap Metal Route.

Electronics

All electronics are required to be recycled through Oregon's E-Cycles program. Drop off at the Recycling Center for no charge.

Paint

Latex & oil-based paint/stains with readable labels are required to be recycled through OR Paint Care. Drop off at Recycling Center for no charge.

Mixed Recycling



Yes! These CAN go in your recycling roll cart.



**Plastic Bottles Plastic Buckets
Plastic Tubs Rigid Plant Pots**

All items must be 2 inches by 2 inches or larger.

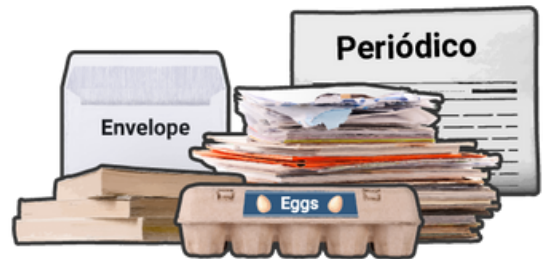


**Flattened Cardboard Food Cartons
Packaging Boxes Beverage Cartons**



**Aluminum Cans Scrap Metal
Steel Cans**

Less than 10 pounds & less than 18 inches.



**Paper & Mail Egg Cartons
Newspaper Paperback Books
Magazines Paper Bags**

Contamination

No! *These are contaminants.*
If it's a NO, it can't go!



No food or liquid
(empty all containers)



No glass
(drop-off only)



No foam



No batteries



No plastic bags
or stretchy plastics

Set Motor Oil beside garbage roll cart.

Mixed Compost

Yes! These CAN go in your mixed compost roll cart.



YARD DEBRIS



Shredded Paper



Grass Clippings
Leaves & Twigs



Weeds & Trimming
Tree Branches



Roots & Brush
Garden Debris

FOOD WASTE



Coffee Grounds/Filters
Tea Bags, Paper Cartons



Grains & Beans
Pasta, Bread



Dairy
Products



Meat & Poultry
Seafood, Bones



Fruits
Vegetables

Contamination

No! *These are contaminants.*
If it's a NO, it can't go!



No clear plastic produce
or takeout containers



No glass
(drop-off only)



No foam



No pet waste



No plastic bags
or stretchy plastics

When in doubt, throw it out or find out!

Recycling Beyond the Curb

Your all-inclusive list of what you can recycle beyond-the-curb in North Lincoln County. Stop by one of our locations today!



Office Recycling Center

1726 SE Hwy 101, Lincoln City, OR 97367

NO CHARGE: Glass Bottles/Jars, Scrap Metal, Empty/Punctured Propane Tanks, Athletic Shoes, Cooking Oil, Motor Oil, Paint, All Batteries, Electronics, Non-Refrigerated Appliances, Cardboard

CHARGE: Fluorescent Tubes/Lamps, Automotive/Hazardous Liquids, Shredding, Refrigerated Appliances, Full Propane Tanks

Depoe Bay Recycling Depot

380 SE Shell Ave, Depoe Bay, OR 97341

NO CHARGE: Cardboard, Glass Bottles/Jars

Depoe Bay City Hall

570 SE Shell Ave, Depoe Bay, OR 97341

NO CHARGE: Small Alkaline & Lithium-Ion Batteries

Schooner Creek Refuse Transfer Station

288 S Anderson Creek Rd, Lincoln City, OR 97367

NO CHARGE: Cardboard, Glass Bottles/Jars, Scrap Metal, Non-Refrigerated Appliances

CHARGE: Refrigerated Appliances, Tires



North Lincoln (541) 994-5555
SANITARY SERVICE

information@northlincolnsanitary.com | www.northlincolnsanitary.com

Schooner Creek Refuse Transfer Station

Hours: Monday through Saturday 8am - 4pm

Closed: Thanksgiving, Noon on Christmas Eve, Christmas, & New Year's Day

Accepted Items

The transfer station rate is by the pound with a minimum charge. Visit <https://www.northlincolnsanitary.com/TransferStation/ItemsAndRates> for the most recent accepted items and rates.

Garbage

The rate to dump garbage is the Transfer Station Scale Rate. There is a minimum charge per dump. Hazardous waste is not accepted.

Scrap Metal

Scrap metal and appliances with no refrigerant are accepted free of charge. For any appliances with refrigerant, the charge will be the Transfer Station Scale Rate.

Yard Debris

Tree limbs, stumps, and clean lumber (not painted or pressure treated), shrubs/bushes, and grass are charged at the Transfer Station Scale Rate.

Recycling

Cardboard and glass are accepted free of charge. All other recycling can be dropped off at the Recycling Center (1726 SE Hwy 101).

Inerts

Concrete, pavement, brick, dirt, and gravel are accepted for a small charge. Please contact the Office ([541-994-5555](tel:541-994-5555)) if you have more than 10 cubic yards.

Tires

All sizes and types of tires are accepted for a charge. Please contact the Office ([541-994-5555](tel:541-994-5555)) for all pricing.



information@northlincolnsanitary.com | www.northlincolnsanitary.com

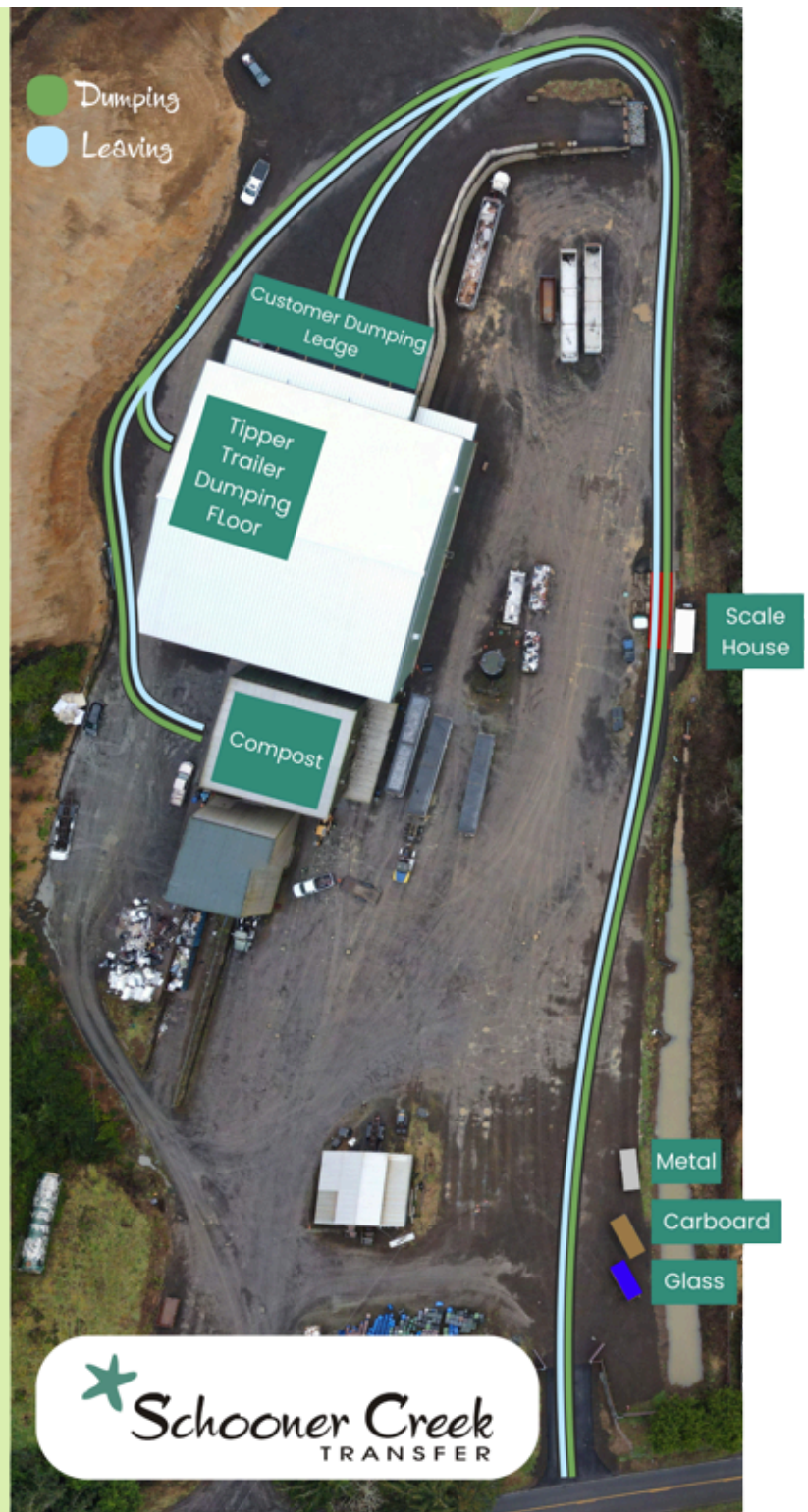
Schooner Creek Refuse Transfer Station

Schooner Creek Refuse Transfer Station is located at
288 S Anderson Creek Road, Lincoln City, OR 97367.

Directions

From North Lincoln City
Hwy 101 at SE 48th St.
(Shuckers Bar & Grill), turn
East at the signal onto SE 48th.
At the stop sign, veer right to
stay on 48th St. This will turn
into Schooner Creek Road.
Two and a half miles from Hwy
101 turn right on Anderson
Creek Road. Go 2 tenths of a
mile and turn right at the street
sign marked "Refuse Transfer
Station".

From South Lincoln City
One mile north of the Siletz
River, turn right on Drift Creek
Road. Turn left at the "T", 1.5
miles from Hwy 101. Proceed
8 tenths of a mile, and turn left
at the street signed marked
"Refuse Transfer Station". If
you get to Schooner Creek
Road, you have gone
approximately 2 tenths of a
mile too far.



 **Schooner Creek** (541) 994-5555
TRANSFER

information@northlincolnsanitary.com | www.northlincolnsanitary.com

Waste Reduction

Why Recycle?

- Recycling reduces the amount of waste that gets sent to the landfill. Instead of these items being discarded, we can recycle the materials and create new products.
- Recycling reduces the amount of energy needed to make new products up to 95%. This saves money and reduces the amount of new raw material that will be needed to create new products.
- Recycling helps with lowering the need to mine, extract, and transport new natural resources. With recycling we turn something that is old and useless to something new and useful.

Why Compost?

- Composting is a natural process used to recycle organic materials, such as plants and food scraps. Composting helps in reducing the amount of waste being sent to the landfill, which produces methane gas.
- Rather than landfilling food waste and yard debris, it can be turned into nutrient rich compost. The compost provides your plants with the healthy nutrient filled soil to promote healthy growing.
- Compost helps loosen clay soil, which promotes root development and increases the amount of moisture the soil can retain. Nutrient rich compost eliminates the need for chemical fertilizers.

How to Reduce Your Waste

- Use reusable bottles, cups, shopping bags, & metal straws
- Avoid using single use containers and utensils
- Shop at local markets and resell stores
- Buy reusable silicone storage bags
- Buy in bulk to reduce packaging
- Use paperless billing



We take pride in sustainability and are committed to promoting sustainable solutions to the current and future generations. Thank you for being part of the solution!

Community Resources

Lincoln City City Hall

Address: 801 SW Hwy 101, Lincoln City
Hours: Mon - Fri 8am-5pm
Phone: (541) 996-2151

Lincoln City Water/Sewer

Address: 801 SW Hwy 101, Lincoln City
Hours: Mon - Fri 8am-5pm
Phone: (541) 996-2151

Lincoln City Police Department

Address: 1503 SE East Devils Lake Rd,
Lincoln City
Phone: (541) 994-3636

Lincoln County Commissioners

Address: 225 W Olive St, Newport
Hours: Mon - Fri 8:30am-5pm
Phone: (541) 265-4100

Lincoln County Solid Waste District

Address: 880 NE 7th St, Newport
Phone: (541) 574-1285

Lincoln County Sheriff's Office

Address: 3043 NE 28th St, Lincoln City
Phone: (541) 994-3661

Depoe Bay City Hall

Address: 570 SE Shell Ave, Depoe Bay
Hours: Mon - Fri 8am-5pm
Phone: (541) 765-2361

Depoe Bay Water/Sewer

Address: 570 Shell Ave, Depoe Bay
Phone: (541) 554-8333

Pacific Power

Address: 801 SW Hwy 101, Lincoln City
Hours: Mon - Fri 8am-5pm
Phone: (888) 221-7070

Panther Creek Water District

Phone: (541) 994-7293

Charter/Spectrum

Phone: (844) 321-5205

Astound

Address: 646 US-101, Depoe Bay
Phone: (541) 994-3661

CenturyLink

Address: 926 SW Alder St, Newport
Phone: (541) 765-2361

Northwest Natural Gas

Phone: (541) 994-2111

Samaritan North Lincoln Hospital

Address: 3043 NE 28th St, Lincoln City
Phone: (541) 994-3661

